

The Power of Love



Lee Knernschild,
United Way President

For nearly 100 years, the United Way of Central Missouri has nurtured, encouraged, instilled hope, and looked for ways to create solutions to some of our community's most pressing problems. It is hard to think about illiteracy, homelessness, hunger, or lack of childcare but the truth is there are people right here in our community who need someone to care.

Through our collaborative efforts, United Way is working to create a community where all members have the opportunity to thrive and succeed.

We are working with community partners to provide transportation to and from healthcare appointments for those with no other option.

We are partnering with Aging Best to help retirees transition from their 'work-life' to an enjoyable and fulfilling retirement through our Give 5 Program.

We are collaborating with the local Chamber of Commerce, area businesses, and childcare

facilities to support early childhood programs and ensure children through 5 years of age receive early learning opportunities.

We are establishing a plan for when the next disaster strikes our community through the formation of a COAD (Community Organizations Active in Disaster).

We are helping to feed, shelter, educate, and keep safe through our partnership with 26 agencies and Community Support Grant partners.

For the next few months, our community will be adorned with United Way billboards and campaign-themed decorations signaling to all that it is again United Way Campaign time. This year's Back to the Future theme is especially fitting when you think about the journey of Marty McFly and Doc Brown in this iconic film. Marty and Doc encountered obstacles and challenges but never stopped looking for solutions, much like those in our community who turn to a United Way agency when facing adversity and find a helping hand.

While we like to have fun with our campaign themes there is a serious component to the work of United Way. Our agencies provide critically important services to babies, young adults and seniors. Through the "Power of Love" we ensure that hungry families have enough food to eat, lonely teens have a friend to turn to, and those wishing to stay independent in their homes have the support they need to make this all possible.

Whether you hear about United Way in your workplace, receive a letter in the mail, or see a Dine United sign outside a local restaurant; I hope you will take the time to consider supporting the United Way of Central Missouri. While you may not currently need the services of United Way, you certainly know someone who has benefitted from the work of our 26 agency partners. Over 100,000 individuals turned to a United Way agency in 2023.

Here are a few examples of what our community made possible through the support of the United Way last year:

- 25,200 individuals received medical, dental, and behavioral health services.
- 18,101 warm bed nights and cots were provided for men, women, and children experiencing homelessness or abuse.
- 10,339 youth participated in mentoring and leadership programs that built skills to ensure a bright future.
- 38,084 homebound meals were provided to seniors so they could remain in their homes.
- 1,529 pairs of shoes were provided to children in need.

As we embark on another campaign, I am reminded how extremely generous our community has been to United Way. Reaching our 2024 campaign goal of \$2.6 million will not be easy, but when we all do our part and give what we can, we can change lives and instill hope. Our agency partners and community members in need are counting on us. Can we count on you?

Caring for Our Community

By Ilana Holland,
Jefferson City Medical Group

In 1993, several Jefferson City physicians had a vision. They believed that by merging their practices to create a partnership, they could offer our community better access to medical services. They believed that by remaining independent of a larger healthcare system, they could work more closely with their patients to make the best medical decisions while keeping healthcare cost-effective.

Today, Jefferson City Medical Group (JCMG) is the region's largest independent multispecialty group with over 30 specialties and 100 healthcare providers serving over 80,000 patients annually. Over the last 31 years, JCMG has grown to offer a variety of services in mid-Missouri. In 2022, JCMG opened the JCMG Surgery Center, a 28,000-square-foot, freestanding state-of-the-art facility. The JCMG Surgery Center team offers an extensive list of surgical subspecialties including orthopedics with their development of the only total joint replacement program exclusively in an outpatient setting in mid-Missouri, and podiatry with their nationally recognized Lapiplasty bunion correction surgeries. JCMG continues to invest in next-generation technology, offering comprehensive diagnostic services including Ultrasound, Mammography, CT Scanning with AI capabilities, PET Scanning, and MRI Services. JCMG is accredited by the AAAHC – Accreditation Association for Ambulatory Health Care. As a group, JCMG is not required to be accredited by AAAHC, but chooses to maintain this accreditation and reapply for it every three years to help ensure that the organization is adhering to the strictest quality standards every day. Most JCMG providers are based in the JCMG Medical Building, providing the convenience of one-stop comprehensive patient care. JCMG also has regional clinics throughout Jefferson City, Linn, Columbia, and Fulton.

Founded with the mission of providing high-quality, cost-effective, patient-centered healthcare to Central Missouri, JCMG remains physician-owned and physician-led. As community members, our providers are fueled by a passion for their field and compassion for the friends and neighbors they treat.

While providing high-quality care to patients in a clinical setting is of utmost importance to the physicians at JCMG, caring for our community is equally important. This dedication led JCMG to become a pacesetter organization with the United Way of Central Missouri in 2006. Since then, partnering with the United Way of Central Missouri has allowed JCMG to extend our community outreach by allocating funds to local agency partners. JCMG's providers, 500+ employees, and patients come from all walks of life, yet everyone is influenced by the impactful work of the United Way. JCMG gives to the United Way because we believe in the power of collective action to address the pressing needs of our community. By supporting initiatives that range from education and healthcare to financial stability and crisis intervention, JCMG is proud to help build a stronger, more resilient community for



A penny war for United Way was held in 2023 to vote in the JCMG physicians who would be the faces of the Super Mario Kart cut out. Family Medicine physician, Dr. Ben Cook, secured his spot as Mario, Dr. Brandi Nichols of Women's Clinic was Princess Peach, and JCMG Podiatry's Dr. William Duke held on as Luigi.

everyone. The partnership enables JCMG to extend its reach beyond the walls of the clinic, touching lives in profound and meaningful ways. Whether it's through funding after-school programs for children, providing essential services to families in need, or supporting health and wellness programs, contributing to the United Way creates a ripple effect of positive change.

Throughout numerous United Way campaigns and themes, JCMG employees and providers have come together to create a positive impact and address the needs of our community. While the creative fundraising activities may change to align with the campaign themes, a beloved annual event is our silent auction for United Way. JCMG clinics and divisions generously contribute unique gift baskets with various themes, sparking friendly competition as they bid against each other during the two-day auction. Local food trucks have graciously collaborated with us by setting up at JCMG for our employees and pledging a portion of their sales to the United Way. In 2024, with the theme "Back to the Future," employees enthusiastically voted by donations to challenge

our "Docs" to participate in the "Dunking Booth of Plutonium." Some providers bravely volunteered to let team JCMG "Dunk-A-Doc" for United Way, while others willingly matched donations to nominate another doc for the booth. Although there are usually entertaining games and friendly rivalry to support United Way, team JCMG generously pledges to United Way each year. Payroll deduction and prizes for pledges make giving to the United Way a little sweeter, but our providers and employees give because they witness how the United Way helps our community and the patients they care for each day.

High-quality, patient-centered care is at the core of JCMG's mission. Caring for our community – the community where our patients, providers, and employees live and work – allows us to make a positive impact on the lives of those we serve. Together with the United Way, we can build a healthier, stronger community, where everyone has the opportunity to thrive.



Dr. Stephen Sides of JCMG Internal Medicine takes a shot at dunking Dr. William Duke of JCMG Podiatry during the 2023 Dunking Booth fundraiser for United Way at Jefferson City Medical Group.



Jefferson City Medical Group's annual silent auction for United Way has become a favorite fundraising event for employees. In 2023, the silent auction raised more than \$2,000 for United Way.

It Is Time!



Gregg Bexten,
Hawthorn Bank
United Way Board Chair

It is time once again for the pacesetters to begin the United Way annual campaign. A pacesetter is an organization who takes the lead and sets the standard of achievement for others. Pacesetters are a select group of exemplary businesses that take on the challenge to "jump start" the United Way of Central Missouri's annual campaign each year. They set the standard for leadership and community support and

are critical to the success of the overall campaign. Each year, this powerful group of businesses (which currently totals 30) raises about half of the overall campaign goal.

This year's campaign goal is \$2.6 million. The theme of this year's campaign is "Back to the Future" with the slogan "The Power of Love". As in years past, the United Way is again hosting a decorating contest of a plywood cutout in a shape that promotes the year's campaign theme – and this year that shape is the iconic clock tower from the classic movie. Clock towers will be scored in the following categories: Most United Way, Most Decorated, The McFlyest, Most Unique and Most Back to the Future. The winner of each category will be announced at the United Way's Community Campaign Launch on September 12 at Capital Bluffs Event Center. In the meantime, the completed designs will be located at businesses all around town – so keep an eye out for these decorated displays! Our thanks to

Septagon Construction who has cut the plywood designs for the United Way for several years.

In addition to pacesetters holding their internal workplace campaigns in July and August before the Community Campaign takes place in September and October, some also host community-wide events as part of their fundraisers for the United Way. During the month of August, JCMG is hosting Food Trucks on the JCMG campus on Tuesday's and Thursdays with a percentage of the sales donated to the United Way. Cole County employees hosted the First Annual Cole County Classic Golf Tournament on Wednesday, August 14, with all the proceeds benefiting the United Way of Central Missouri. And not to be out done, the City of Jefferson is hosting a Taste & Give lunch on Wednesday, August 21, from 11 to 1 at City Hall's McCarty Street parking lot with the Miracle Wraps & Pitas Food Truck and a happy hour fundraiser that same day from 3 to 6 at Last Flight Brewing Company. Stay tuned to the United Way of Central Missouri website and Facebook page for more details and fun activities to come!

Thank you to our incredible pacesetters for setting the bar high as you creatively raise funds for our United Way of Central Missouri, and thank you in advance to the rest of our community for helping us in reaching our \$2.6 million goal this year! Your support is critical to the work of the United Way of Central Missouri and its agency partners – who are helping thousands of people in central Missouri live their best possible lives. #LIVEUNITED



United Way of Central Missouri Campaign Co-Chairs "Doc" (Doug Hagenhoff) and "Marty" (Renee Duenckel), dressed in Back to the Future-themed attire, kick off the Pacesetter Campaign Launch in early July at The Millbottom.

Bringing the Community Together for Our Seniors

By Sarah Wood, Homemaker Health Care

Homemaker Health Care has been keeping seniors safe and independent in the community for over 50 years. We started as an in-home agency taking care of individuals in their homes and now, we continue to do so with our two wonderful programs, the Homemaker Health Care (HHC) Community Outreach program and the Caring Chair program. The HHC Community Outreach program provides temporary assistance with medical equipment to low-income seniors, persons with disabilities, and persons in recovery. Individuals who are recovering from an illness, injury, or surgery can borrow items such as walkers, wheelchairs, bedside commodes, and many other medical equipment items free of charge on a short-term temporary basis. Once the individual has recovered or is no longer in need, the items are returned, cleaned, and then reused by someone else. Members of the community donate the majority of the medical equipment items used. The Caring Chair program is specifically designed for breast cancer patients who have recently, or are going to have, a mastectomy or double mastectomy, by suppling the use of a reclining lift chair that lifts the patient from a sitting to a standing position, given that the use of the arms can be very painful and discomfoting during the first several weeks after this procedure. The chair is delivered by a breast cancer survivor volunteer, who not only brings the chair, but provides a message of hope. Patients have use of the chair free of charge during their recovery and then the chair is picked up, cleaned, and

goes out to others in need. As a non-profit United Way partner agency we rely on the United Way, private donors, and fundraising to keep these programs alive. The United Way has been an essential role in keeping Homemaker around for more than 50 years. Homemaker Health Care hosts the Capital City Festival of Lights drive-thru light park every December out at Binder Park in Jefferson City. This is Homemaker Health Care's big fundraiser that we have every year to provide HHC with the funding we need to help keep our programs running. This year, the park will run from Saturday, November 30th till Wednesday, December 25th. The park will be open Tuesday – Sunday (closed on Mondays) from 6pm-9pm. Admission is \$20 per car and \$35 per bus or RV. Every November, it takes several volunteers to set up the two-mile drive with all the Christmas displays. The displays feature everything from Santa and his reindeer to several synchronized displays that are synched to music and transmitted to the car via FM radio. After setup, it takes several more volunteers that actually run the light park every night. And at the very end, all light displays are taken down and put in storage till the next year. Without these amazing volunteers, HHC could not put on this fundraiser. HHC is very appreciative of every single volunteer who makes this incredible fundraiser possible. Fundraisers like the light park and support from the United Way are so important because as the population continues to age, the need for our medical equipment items increases. Falls are the number one reason for hospitalization and or death in seniors 65 years of age or older. HHC is finding that many insurance companies don't always pay for many of these items needed in the home. HHC works with the local hospitals, doctors' offices, physical therapists, and several in-home agencies to identify these individuals in need. HHC keeps several items on hand so when these needs arise the equipment is readily available for use. HHC is open by appointment only and covers 9 counties including Callaway, Camden, Cole, Maries, Miller, Moniteau, Morgan, Osage, and Phelps. If you are an individual in need of equipment, please reach out by calling us at 573-635-6603 or visit our website at www.homemakerhealth.org.



Client Jackie utilizes Homemaker Health Care's The Caring Chair Program following a surgery, helping lift her from a sitting to a standing position.

MOBILE FOOD PANTRY SCHEDULE IN THE UNITED WAY OF CENTRAL MISSOURI SERVICE AREA

August 2024

The Food Bank for Central & Northeast Missouri will be providing food at no charge to those in need at the following locations. Please confirm any location, date and/or time changes for this month on The Food Bank website at sharefoodbringhope.org. For questions, call The Food Bank at 573-474-1020.

- Mobile Food Pantry Tips:
- Remain in your vehicle for distribution; it is a drive-thru process.
 - Clear space in your trunk or back seat to receive food.



- | | | |
|--------|----|--|
| (FRI) | 2 | SOUTHERN CHEROKEE
15792 COUNTY RD 5200, ROLLA
10:00 AM - 12:00 PM |
| (SAT) | 3 | CATHOLIC CHARITIES
1015 EDMONDS ST, JEFFERSON CITY
9:00 - 11:00 AM |
| (THUR) | 8 | KNIGHTS OF COLUMBUS
1822 TANNER BRIDGE RD, JEFFERSON CITY
3:30 - 5:30 PM |
| (FRI) | 9 | CHURCH OF OSAGE HILLS
5237 OSAGE BEACH PKWY, OSAGE BEACH
1:00 - 3:00 PM |
| (TUES) | 13 | TRINITY LUTHERAN CHURCH
13007 ROUTE C, RUSSELLVILLE
1:30 - 3:30 PM |
| (SAT) | 17 | CAPITAL WEST CHRISTIAN CHURCH
1315 FAIRGROUNDS RD, JEFFERSON CITY
8:00 - 10:00 AM |
| (WED) | 21 | BOYS & GIRLS CLUB
11105 LAFAYETTE ST, JEFFERSON CITY
4:00 - 6:00 PM |
| (THUR) | 22 | ANNUNCIATION CATHOLIC CHURCH
310 MILLS ST, CALIFORNIA
4:30 - 6:00 PM |
| (TUES) | 27 | FIRST BAPTIST CHURCH OF BELLE
203 2ND ST, BELLE
10:00 AM - 12:00 PM |
| (WED) | 28 | ST. MARTINS CATHOLIC CHURCH
7148 ST. MARTINS AVE, ST. MARTINS
4:00 - 6:00 PM |

Updated: 7/17/2024

✂

YES! I want to support our community! My total annual gift is \$ _____.

Gifts to United Way of Central Missouri are tax-deductible. For information about the tax advantages for including United Way in your will and estate planning, please call 573-636-4100. United Way provides no goods or services in consideration for this contribution.

Name _____ Phone _____

Address _____ City _____ State _____

Zip Code _____ E-mail Address _____

☐ I would like to remain anonymous in any publications regarding my donations to United Way of Central Missouri.

Payment Option 1: Cash or Check

Include your cash/check donation with this cutout and mail to the United Way of Central Missouri at 205 Alameda Drive, Jefferson City, MO 66109.

☐ Please use my donation to benefit all of the United Way of Central Missouri partner agencies, allowing me to make a greater impact in our community.

☐ **DESIGNATIONS:** Please designate my donation to the following partner agency(ies). Minimum designation amount is \$25.00. Designations to agencies not a part of the United Way of Central Missouri network will be directed to our general campaign fund.

Payment Option 2: Online

Make your donation online by going to our website at www.unitedwaycemo.org or scanning the QR code below:

To support our community cut out the form, complete the information, and mail it to the United Way of Central Missouri at 205 Alameda Drive, Jefferson City, MO 65109.

Partner Agencies

4-H Youth Program	Dreams to Reality
ABLE	Girls Scouts
American Red Cross	Homemaker Health Care
Big Brothers Big Sisters	Jefferson City Area YMCA Child Development Center
Boys & Girls Club	Little Explorers Discovery Center
Capital City CASA	Rape & Abuse Crisis Service
Capitol Projects	Salvation Army
Catholic Charities	Scouting America
Central Missouri Foster Care & Adoption Association	Senior Nutrition Council
Common Ground Community	Special Learning Center
Building	The Sneaker Project
Community Health Center	Tri-County YMCA
Compass Health Network	UCP Heartland - Gibbs Center for Independence
Council for Drug Free Youth	

United Way

What's Happening



FOOD TRUCKS

10% OF SALES DONATED TO UNITED WAY!

Thursday, 8/1 | 2 Odd Dawgs
Tuesday, 8/6 | Smokey Island Hut
Thursday, 8/8 | Casa Cantina
Tuesday, 8/20 | Arnold's Smoke & Grill
Thursday, 8/22 | Zydeco's Cajun Kitchen
Tuesday, 8/27 | Lehmen's BBQ
Thursday, 8/29 | Patty Wagon

11 am-1 pm | Parked behind JCMG by Parking Garage

United Way of Central Missouri & Member Agencies Events Calendar

	August
Aug 21:	City of Jefferson Food Truck Fundraiser for United Way at City Hall
Aug 21:	City of Jefferson Happy Hour Fundraiser for United Way at Last Flight
Aug 22:	JCMG Food Truck Fundraiser for United Way (Zydeco's Cajun Kitchen)
Aug 22:	Little Explorers Fundraiser at Chick-Fil-A
Aug 24:	Battle of the Brews Fundraiser benefiting The Special Learning Center & The Sneaker Project
Aug 27:	JCMG Food Truck Fundraiser for United Way (Lehmen's BBQ)
Aug 29:	JCMG Food Truck Fundraiser for United Way (Patty Wagon)
Aug 29:	The Special Learning Center Perfect Pairings Fundraiser
Aug 29:	The Salvation Army Narcan Training in Versailles

	September
Sept 6 & 7:	Early Childhood Training for Moniteau County
Sept 7:	YMCA Partners for Youth Music Festival Fundraiser
Sept 9:	Boys & Girls Club Cork Fork & Brew Fundraiser
Sept 12:	United Way Community Campaign Launch
Sept 13:	Mental Health First Aid Training
Sept 13:	Common Ground Trivia Night Fundraiser
Sept 16:	Texas Roadhouse Fundraiser for CASA
Sept 20:	United Way Day of Caring
Sept 27:	Mental Health First Aid Training
Sept 28:	Early Childhood Training

	October
Oct 2:	Big Brothers Big Sisters Chili Cook-off/Cornhole Tournament
Oct 10:	Capital City CASA Raise Your Glass Fundraiser
Oct 14:	Professionalism in Early Childhood Training
Oct 17:	United Way Power of the Purse Fundraiser
Oct 17:	Bartlett & West Trivia Night Fundraiser for United Way
Oct 24:	RACS Masquerade Gala

For additional information, please visit www.unitedwaycemo.org/calendar.

Autographed Cody Jinks Guitar Raffle

Raffle Tickets \$15



*All proceeds benefit ABLE Learning Center Because Adult Basic Literacy Education matters!





City of Jefferson TASTE & GIVE

CITY HALL MCCARTY ST. LOT
WEDNESDAY, AUGUST 21
11:00AM - 1:00PM

Purchase lunch from Miracle Wraps & Pitas and a portion of the proceeds donated to the United Way of Central Missouri!







City of Jefferson HAPPY HOUR

LAST FLIGHT BREWING CO
WEDNESDAY, AUGUST 21
3:00-6:00PM

A portion of the proceeds donated to the United Way of Central Missouri



SIP & SUPPORT WITH US!

Perfect PAIRINGS

Benefiting Special Learning Center



Join us for a night of culinary adventures! Savor unique food, drink, and interactive pairings hosted by local celebrities, participate in a lively spirit pull, and enjoy lavish charcuterie boards at every table. Don't miss this annual sold-out event supporting children with disabilities in our community!

Thursday, August 29th
Capitol Plaza Hotel, Jefferson City
5:30 PM Pairings Begin
\$65 Per Person / \$600 Table of 10



For more information or to purchase tickets, visit: speciallearningcenter.com/perfectpairings

Spirit Night with Little Explorers Discovery Center!

Join us at Chick-fil-A for Spirit Night and help raise funds for our new playground!





Enjoy delicious food from Chick-fil-A while supporting a great cause.



Make a difference in the lives of our little explorers by helping us build a new playground.



Come join the fun and support our community's youngest learners!

Chick-fil-A
3407 Missouri Blvd
Jefferson City, MO 65109

August 22nd
5-9 pm
Make sure to Mention you are there to support LEDC!



Perfect Pairings is Presented To You By

SLC is Proud to be a partner agency 

Meet Our Board: Carlos Graham, Lincoln University



Tell us about you:
I was born and raised in Russellville, Alabama. I have a Bachelor of Science in Sociology from Southern Illinois University at Edwardsville and a Masters of Art in Sociology/ Criminal Justice from Lincoln University. I moved to Jefferson City in July of 1997 to work at Lincoln University. I am married to Shalonda, and we have two daughters (Tiara, who is 33 and Emmarie, who is 19) and one grandson (Kip, who is 9).

Employer:
Lincoln University- Senior

Director of Campus, Community and Government Relation and Auxiliary Services.

Community Involvement:
United Way of Central Missouri Board Member, Board Chair for Central Missouri Foster Care and Adoption Association, Board Chair for Capital Region Medical Center Advisory Board, Capital Region Medical Center Foundation Board (Lifetime Member), Jefferson City Housing Authority Vice Chair, Safetynet Board Member, Legends Bank Advisory Board Member, Former Jefferson City Council Ward 4, Past President of Jefferson City Host Lions Club, Past President of American Red Cross of Central and Northern Missouri, Ameren Missouri Community Voices Advisory Board Member, Community Foundation of Central Missouri Board Member, Involved in Downtown Business Association, East Side Business Association and West Side Business Association, Member of Alpha Phi Alpha Fraternity Incorporated and Member of Ensley Rising Star #47 Masonic Lodge

Why did you say yes when asked to be on the United Way Board of Directors:
For the past 12 years I served

as Co-Chair for our campaign at Lincoln University. I was honored by the opportunity to contribute to an organization that plays a pivotal role in our community.

Favorite thing about United Way:
This organization brings together our community with different people from all walks of life to pool together resources to address all types of financial gaps, educational gaps and to help make differences in people's lives.

Favorite thing about our community:
One word: People. Our community is so caring and willing to give to causes that will have a positive impact on our community and their lives.

Number one on your bucket list:
Visit all 50 States.

Fun fact about you:
I love telling jokes and making people laugh.

Words you live by:
I always tell others and remind myself that the name of this game in Life is simply a 5 letter word. That word is: THINK. If you think before you say, and think before you act - you will go a long way in life.

Full, Productive, Healthy Lives for Everyone



On August 1, Compass Health Network hosted an Open House & Ribbon Cutting for the grand opening of its new clinic in Eldon – a Behavioral Health and Substance Use Treatment Services facility.

By Karen Cade & Ashlie Cumpton, Compass Health Network

Compass Health Network, partner agency of the United Way of Central Missouri, is a federally qualified health center and a nonprofit healthcare organization that provides a variety of services. Our mission is to “Inspire Hope. Promote Wellness.” Through the delivery of compassionate, quality care, we help people find their way along a path to better physical and emotional health. Operating only from the highest ethical and professional standards, we provide access to innovative care designed to meet the health needs of the communities we serve.

In Jefferson City, Compass Health provides behavioral health services including psychiatry, therapy, case management, substance use treatments, and several additional specialized programs, including residential services.

Our vision is “full, productive, healthy lives for everyone.” Compass Health provides services to all individuals, regardless of their socioeconomic status, ability to pay, insurance status, sexual identity and any other factors that may limit an individual's ability to access health care services and support. While any individual may engage with our system of care, we provide targeted outreach to the marginalized, underserved, underinsured, and uninsured residents that reside within our service region. We recognize the correlation between low-income status/insurance status, and an individual's ability to find accessible, affordable, high quality health care services, despite the discipline (primary medical, dental and/or behavioral health care services). To combat the numerous obstacles that face our patient population, we have adopted the Open Access Model of Care for behavioral health services, providing no appointment necessary for walk-in services at most of our outpatient clinical locations.

Compass Health provides a culturally appropriate and compassionate treatment environment that promotes the safety of all clients and staff members. Our system continues to cultivate and prioritize diversity, equity, inclusion, and belonging (DEIB) within our workplace, workforce, and all services delivered by the agency. We value the quality of work life; the environment is open and accepting of individual differences and all employees are encouraged to maximize their potential while exhibiting a commitment to providing quality services and support to all customers in a culturally proficient and trauma-informed manner.

Clinical success within programs (primary medical, dental, behavioral health) all have well developed metrics that we use to measure the effectiveness of programming. More specifically, when we narrow this down to the client level, each client that engages in treatment services has their own individualized treatment, with their own unique goals, that we use as a roadmap to exceptional clinical care. Over the course of treatment, we can gauge the individuals' overall success and how the services and support we provide as a system have assisted the individual obtain and sustain optimal health and wellness. That may include such things as improved overall functioning because of engagement with our behavioral health care (mental health and/or substance use disorder services) professional staff. For larger programming, we can then compare overall agency success with other health centers/ agencies to see how we rank at both the state and national levels.

This information is then shared with our quality, administrative and financial teams to ensure we are maximizing the services provided while creating the biggest impact on the lives of our customers.

Compass Health believes everyone is our customer - clients, coworkers, community members, etc. The positive work we do impacts all our customers. We recognize that serving the client also serves the client's family members, friends, and our community; addressing a mother's depression not only has a positive impact on her personal life, but also impacts her relationship with her children and her relationship with coworkers. We make a difference in the lives of the people we serve.

The agency consistently receives overwhelmingly positive feedback when audited by our accrediting bodies/funders including HRSA, CARE, The Department of Mental Health, and JACO.

One example of our success includes the following story:

“The first client I ever served was a virtual student due to severe anxiety. They started therapy at the beginning of their school year virtually, as a student who came to school in person for therapy meeting at the end of the school day. They failed a couple of classes their previous year. In our time together they have been able to work on coping skills, relaxation skills, and processing significant family trauma. They are returning to in person school this fall and are now slated to graduate early.” - School Based Team

The United Way of Central Missouri has stood by us, helping to achieve our mission by providing funding, credibility, and the opportunity for collaborations and partnerships.



Wonderland Camp, a nonprofit organization located in Rocky Mount at the Lake of the Ozarks, provides camp experiences for people with disabilities.

“Be here, be you and belong”

By Mike Clayton, Wonderland Camp

Wonderland Camp is a nonprofit organization providing camp experiences for people with disabilities located in Rocky Mount, Missouri at the Lake of the Ozarks. We have been serving campers for over 55 years with a fun outdoor and indoor camp experience. Campers come for a week or a weekend to enjoy swimming, boating, kayaking, crafts, basketball, golf, sand volleyball, rock climbing and so much more. We're here for friendships, encouragement and high-fives! All activities are adaptable so that everyone can participate. At Wonderland Camp we say “Come to Wonderland Camp to be here, be you and belong!”

Wonderland Camp is excited to have received a Community Support Grant from the United Way of Central Missouri this year in the amount of \$13,500! This grant allowed us to purchase a pre-enjoyed 17 passenger EV tram so that we may transport our campers with disabilities across our 125-acre camp. Our campers love it! This tram has also allowed us to entertain visitors and potential donors, so we feel it has dual purpose and is very important to the operation and growth of our camp. Additionally, United Way of Central Missouri previously awarded us a grant that helped our camp purchase a wheelchair van with ramps. This van is still in operation and is used to transport campers and for promotions and fundraising.

Charles J. Miller, the founder of Wonderland Camp, had a dream. It all started in the summer of 1969 with a simple conversation about building a camp where people with disabilities could enjoy the outdoors in a fun, safe, loving environment. Today Wonderland Camp boasts over 20 buildings, a wide array of adaptable challenge elements, a 100 person staff during summer months and enough outdoor and indoor fun for more than 1,700 campers each year.

We are so grateful to the mission of United Way of Central Missouri and for their support of Wonderland Camp!



Pictured Above: Thanks to a 2024 United Way Community Support Grant, Wonderland Camp was able to purchase a 17 passenger tram to transport campers with disabilities across its 125-acre camp.

Pictured Right: With a previously awarded grant from the United Way, Wonderland Camp was able to purchase a wheelchair van with ramps, which the organization still uses today.



Meet Our Campaign Co-Chair: Doug Hagenhoff, Hawthorn Bank



Tell us about you/your family:
I grew up in Westphalia and attended grade school at St. Joseph and graduated from Fatima High school in 1982. I graduated from college at CMSU in Warrensburg (go Mules!), which is where I met my wife Jennifer. Jennifer is a retired teacher, having spent her entire 30-year career serving the families of the Fatima school district. Her love for children continues in retirement as she now works part-time at Discovery Place daycare, and she just completed her second school year as a “big” for a “little” at East School. We’ve been married 35 years and have two daughters,

Brooke and Meghan. Brooke is a Lead Meteorologist with the U.S. National Weather Service in Des Moines. Meghan is a Registered Dietician with Missouri Consolidated Health Care Plan. She and her husband Joe live here in Jefferson City and welcomed their daughter Allie Mae on March 21st! Jenny and I are quite smitten with her and have loved adding the titles of Grandma and Grandpa!

I love to be outdoors so on the weekends you’ll usually find me at the family farm, hunting, fishing or taking my old hot rod out for a drive.

Occupation:
I’m a Vice President/Consumer Loan Supervisor at Hawthorn Bank and have worked there just over 9 years.

Community Involvement:
Jefferson City Evening Lions Club member for 20+ years, holding positions of Membership Chair, Treasurer, Tail Twister, and current Marketing/ Communications chair; Active member of First Christian Church, where I’ve been Deacon, Usher, Treasurer and currently Personnel Chair; Outlaw Car Club positions of Treasurer and President; Jefferson City Salute

to America festival committee member, 2021 event chair and current board member; 2019 graduate of Leadership Jefferson City; and various roles with United Way of Central Missouri - committee member for Hawthorn Bank’s Pacesetter Campaign, Governing Body member, Fund Allocation Committee member, and now starting my second year as a Co-Chair.

Why are you passionate about the United Way?
There is so much need in our community and there are great agencies out there addressing those needs every day; United Way gives me the opportunity to help them all! United Way allows me to join with hundreds of others that volunteer their time and give their dollars to support those agencies and help our friends and neighbors. Having served on the Fund Allocation Committee for the last 6 years, I’ve seen firsthand how those dollars are used and what good stewards of those donated funds the United Way is.

Why did you say ‘Yes’ to the role of United Way Campaign Co-Chair?
Speaking in front of a group

is NOT something I’m comfortable doing, so I have to admit that I was pretty nervous when I was asked, but the work that the United Way and our partner agencies do is so important that I couldn’t pass up the opportunity to share the message about all the great things that the United Way, our volunteers and our partner agencies do every day in our community to help everyone live their best possible life.

Favorite fun fact about the United Way:
I love the GIVE 5 “civic matchmaking” program! As someone who has an eye towards retirement next spring, I love this program of matching retirees (and soon

to be retirees) with volunteer opportunities. I’m sure it won’t take me long to sign up for a class after I retire.

Most memorable Campaign Rally so far:
I don’t know that I can pick a favorite. They’re all so much fun! I love helping share the United Way story and getting to meet with the great volunteers and donors we have. I say all the time that the generosity of the folks in our communities is so amazing, and Jenny and I are blessed to live, work, and have raised our daughters here.

Favorite Back to the Future scene:
I pretty much like that whole movie, but I’m a hotrodder so

if I had to pick a favorite scene, it would have to be when Doc runs the DeLorean by remote control and does a big ‘ol burnout with it before cutting it loose and sending his dog Einstein into the future.

Words to live by:
It is amazing what you can accomplish if you do not care who gets the credit. To me, it’s a reminder to stay humble and remember that there are always great people working behind the scenes as a team to accomplish great things.

Meet Our Campaign Co-Chair: Renee Duenckel, Jefferson Bank



Tell us about you/your family:
I am a St. Louis native and a 1990 graduate of Lafayette High School. After graduating from Southeast Missouri State University in 1994, I moved to Jefferson City for my first job, honestly having no intention of staying in a “small town.” It was here that I met my husband, Curt, and am glad I never left. Curt has worked in the construction industry for over 30 years and serves many custom home builders in his role with Mid City Lumber. We have been married for 29 years, have two children, Cole and Claire, and one daughter-in-law, Reagan. Cole is a communications specialist for MODOT. Claire is a junior at Missouri State University pursuing a degree in Entertainment Management. Reagan just completed her master’s in clinical counseling and is serving as a case worker with Central Connections. I am honored to call this community “home” and am thrilled I learned to love a “small town!”

Occupation:
Vice President, Director of Marketing at Jefferson Bank

Community Involvement:
• United Way -

Governing Body Member, Marketing Committee, 100th Anniversary Committee, currently Campaign Co-Chair

- Jefferson City Chamber - Board Member, serves on Gala, Golf Tournament, and Business Summit Committees, 2023 Graduate of Leadership Jefferson City
- Westside Business Association - Served as President and Board Member
- Immanuel Lutheran Church – Honey Creek, member
- Council for Drug Free Youth – former program facilitator
- Salute to America – former parade event chair

Why are you passionate about the United Way?
When I look at the needs within our community and surrounding counties, I always have the feeling that I want to do more, serve more, volunteer more.... And with the United Way, I had the realization that THIS is the way to have the widest impact. Our agencies work as true partners to serve the needs in our community, with the most impact, least amount of overlap and largest stretch of resources. I am hooked for LIFE!

Why did you say ‘Yes’ to the role of United Way Campaign Co-Chair?
When you take a look at our community leaders and Pacesetter companies, and the true “buy in” we have for the United Way... it is a complete HONOR to represent these change-makers. Being a Campaign Co-Chair simply gives me the platform to visit and thank these changemakers. I have always believed that people love to serve if they know where the needs are. I couldn’t pass up the honor to serve my community and my Pacesetter company, Jefferson Bank! The only answer was YES!

Favorite fun fact about the United Way:
91 cents of EVERY dollar

donated goes right back into our community... WOW! That is impressive and very important for our community and donors to know that their donation goes a long way. Through the fund allocation process, and the efficiency and dedication of the United Way staff, we can rest assured that we are making the biggest impact.

Most memorable Campaign Rally so far:
The crew at SSM St. Mary’s was amazing. “Marty” showed up (in costume) and shared about the \$2.6 million goal and how “her” team would make a huge difference in reaching that goal. Since “Marty” had talked to “Doc” in the future, I asked “Marty” if we reached the goal and (SPOILER ALERT), “Marty” said we DID! It was so fun to see the SSM leaders jump onboard with the theme, characters, and the dialogue among this Pacesetter team!

Favorite Back to the Future scene:
Fitting with the United Way goals this year, my favorite scene is the opening guitar/amp scene where Marty always trusts Doc’s crazy antics and newest creation. Marty plugs his guitar into the ridiculously powerful amplifier and speaker, pushes the limit on every piece of equipment and simply “GOES FOR IT!” And, once he pushes too far, Marty is not discouraged. He simply gets up and says, “let’s rock and roll!” Just like our United Way goal, we will go over, through and around any obstacle that gets in our way! We are a “CAN-DO” crew, just like the Doc & Marty Duo!

Words to live by:
Treat others like you want to be treated and there is no one better than anyone else. Imagine that every person has a sign around their neck that says, “Make Me Feel Important.”


United Way of Central Missouri 2024 Campaign Leadership Team

The Campaign Leadership Team is comprised of passionate, dedicated volunteers that help the United Way reach hundreds of organizations in our community by meeting with business leaders to seek their support and assist internal campaign leaders to plan successful workplace campaigns. They are the face and voice of the campaign, and we are so grateful for these volunteers!

Campaign Co-Chairs:



Doug Hagenhoff (Hawthorn Bank)



Renee Duenckel (Jefferson Bank)

Team Captains:

- Stephanie Lehmen, C&S Employment Solutions
- Doug Otto, American Family Insurance
- Derek Schnieders, GFI Digital
- Gaye Suggett, Ameren Missouri
- Janet Wear-Enloe, SSM Health St. Mary’s Hospital

- Kevin Fick, Jefferson Bank
- Sydney French, DeLong’s
- Michelle Gebhardt, Jefferson Bank
- Nancy Gratz, Gratz Real Estate & Auctioneering
- Madison Hamacher, MCMH
- Darren Heckman, River Region Credit Union
- Lori Hoelscher, Ameren Missouri
- Ryann Kampeter, ABC17 & FOX22
- Claudia Kehoe, Community Volunteer
- John Kehoe, Osage Ambulances
- Aubrey Krcmar, Ameren Missouri
- Brenda Leydens, Mid America Bank
- Tyler Luebbert, Mid America Bank
- Tony Miller, GFI Digital
- Brad Shimmens, Clean Fuels
- Tim Sperfslage, Alliance Technical Group
- Crystal Tellman, Hawthorn Bank
- Brinn Thorsten, Central Bank
- Ashley Varner, Hitachi Energy
- Connie Vaughan, Community Volunteer
- Leslie Verslues, Acrisure
- Lindsay Welch, ABC17 & FOX22
- Ronna Wilson, Legends Bank

Campaign Leadership Team Members:

- Matt Amick, Missouri Soybean Association
- Cassandra Atchison, Modern Litho
- Amber Austin, Capitol Plaza Hotel & Convention Center
- Trenton Barbour, Jefferson Bank
- Tyler Beck, GFI Digital
- Greg Benton, IBEW Local #2
- Erica Bisig, Missouri Hospital Association
- Sarah Bohl, Community Volunteer
- Darus Brondel, Capital Materials
- Stacy Brown, Jefferson Bank
- Sarah Cain, Capital Machine Company
- Sharon Campbell, Missouri Farm Bureau
- Sarah Coe, Capitol Plaza Hotel & Convention Center
- Ross Dickneite, Delta Chi International Fraternity



2024 United Way of Central Missouri Pacesetters

A Pacesetter is an organization who takes the lead and sets the standard of achievement for others. Pacesetters are a select group of exemplary businesses that take on the challenge to “jump start” the United Way of Central Missouri’s annual campaign each year. They set the standard for leadership and community support and are critical to the success of the overall campaign. United Way of Central Missouri is proud to stand United with these extraordinary partners. In 2023, this incredible group raised an amazing \$1,250,094 -- or 52% of the \$2.4 million campaign goal!

Acrisure

Bartlett & West

Capital Region Medical Center

Central Bank/Central Technology Services

City of Jefferson

Cole County Government

Fechtel Beverage & Sales

First Mid Bank & Trust

GFI Digital

Genesis Company

Hawthorn Bank

Huber & Associates

Jefferson Bank

Jefferson City Medical Group

Joe Machens Capital City Ford

Mid America Bank

Midwest Independent BankersBank

Missouri Auto Dealers Association

Missouri Farm Bureau

Missouri Hospital Association

Modern Litho

Modine Manufacturing

Osage Ambulances

Rusty Drawing Chevrolet Buick GMC

Cadillac Toyota

Schnuck’s

Septagon Construction

SSM Health St. Mary’s Hospital

Three Rivers Electric Cooperative

United Way & Member Agencies

Williams-Keepers

\$.91

of every dollar donated goes directly to

SERVICES

1 IN 3

people are touched by a

UNITED WAY AGENCY

104,991

PEOPLE SERVED

\$2.6 MILLION

2024 CAMPAIGN DESTINATION

We have one life.

To live better, we must

LIVE UNITED

United Way of Central Missouri 1925-2024

Feeding Hungry Children in our Community

Have you wondered what happens during the summer for the children who are on the free-and-reduced lunch program at school? That's what the Food 4 Kids Program is for. Food 4 Kids is the summer feeding program that provides lunches to children Monday through Friday throughout the summer. The program starts when summer school ends and goes until school starts in August. Each morning a group of volunteers arrives at First Presbyterian Church to make sandwiches and pack sack lunches for up to 160 kids. This year the packers include volunteers from Immaculate Conception Church, Wesley Methodist Church, Scholastic, Grace Episcopal Church, First Baptist Church, First Presbyterian Church and First Christian Church. Lunches include a drink, a sandwich, a fruit cup and a granola bar or cookie. Once the lunches are made, they are packed into large coolers and volunteers deliver them to designated distribution sites. Once there, they pass out the lunches to hungry children at locations known to be pockets of poverty. This year the delivery teams are from Legends Bank, Hitachi Energy, Memorial Baptist Church, Healthcare Services Group, SSM Health St. Mary's Hospital, River Region Credit Union, Farmer Holding Company, Schnucks, Huber & Associates, Wipro,

City of Jefferson, Capital Region Medical Center, Jefferson City Medical Group, Jefferson Bank, Scholastic, Central Bank, Jefferson City School District, United Way and some of the churches mentioned previously. The biggest challenge that the Food 4 Kids Program faces is determining how many lunches to take to each site. Shelley Swoyer, the coordinator from the First Presbyterian Church, estimates how many children will show up at each site based on past years' participation and weather conditions. The first week of the program there were 109 kids present on one day. If there are not enough lunches, kids are given snack packs of nonperishable foods and the number of lunches delivered to that site the next day is increased. Food for the lunches is provided by United Way of Central Missouri thanks to the generous sponsorship support of Scholastic. Without this program, children may go hungry, especially the last week of the month when food resources may be scarce at home. The program's goal is to reach as many children in need as possible by distributing to sites that are in neighborhoods where food insecurity is a reality for some families. The program is open to every child; there is no requirement that they live in the neighborhood served. Everyone involved in the program truly appreciates the work being done. The volunteers enjoy the work they do, the packers enjoy making sandwiches, and the deliverers have the humbling opportunity to meet the children served and see the appreciation for the meal they may not have received otherwise. This is truly a program where many volunteers from throughout Jefferson City work together to meet a critical need: feeding hungry children in our community.

DINE UNITED FOR UNITED WAY

Support the 12th annual Dine United fundraiser for the United Way of Central Missouri by patronizing these local establishments during the months of September, October & November!

PARTICIPATING ESTABLISHMENTS

BIG WHISKEY'S AMERICAN RESTAURANT & BAR
LEE'S FAMOUS RECIPE CHICKEN
OSCAR'S CLASSIC DINER
WEST MAIN PIZZA

BARVINO
BARWHISKEY
CULVER'S
DOMENICO'S ITALIAN RESTAURANT
MCDONALD'S - RUPRECHT ORGANIZATION

COLTON'S STEAK HOUSE & GRILL
PANCHEROS MEXICAN GRILL
PLATE & POUR
READY POPPED KETTLE CORN & MORE
STEVE'S FAMILY STYLE RESTAURANT

THE POWER OF LOVE

United Way
United Way of Central Missouri

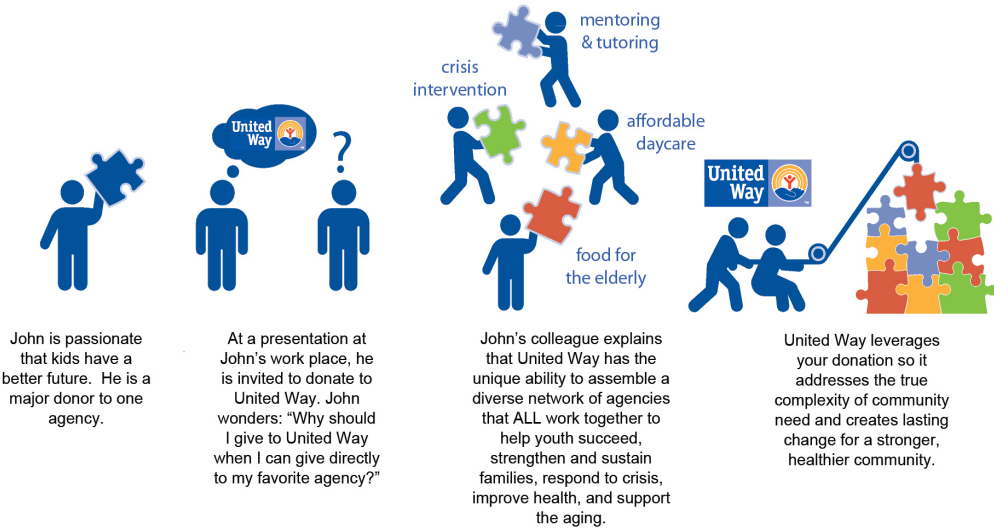
Congratulations! TO OUR WINNERS

We are so proud of you!

Carlos Graham, United Way Board Member
Fisher Family Good Samaritan Award

Theresa Verslues, United Way Staff
Fisher Family Good Samaritan Award

Why Give to United Way?



ENSURE A VIBRANT FUTURE FOR YEARS TO COME

UNITEDWAYCEMO.ORG/FOUNDATION

Foundation United Way United Way of Central Missouri